

Table of contents

Key to symbols	7
Preface	9
Part 1 — Variations 4...dxc4.....	11
4...dxc4 rare+5.e4.....	11
4...dxc4 5.a4 rare+5...♙g4	13
4...dxc4 5.a4 e6 6.e3	17
4...dxc4 5.a4 e6 6.e4.....	26
4...dxc4 5.a4 ♕f5 6.♗h4	40
4...dxc4 5.a4 ♕f5 6.e3 rare+6...e6 7.♕xc4 ♕b4 8.0-0 0-0	52
4...dxc4 5.a4 ♕f5 6.e3 e6 7.♕xc4 ♕b4 8.0-0 ♖bd7 9.♗c2	58
4...dxc4 5.a4 ♕f5 6.e3 e6 7.♕xc4 ♕b4 8.0-0 ♖bd7 9.♗h4	67
4...dxc4 5.a4 ♕f5 6.♗e5 rare+6...e6	69
4...dxc4 5.a4 ♕f5 6.♗e5 ♖bd7 7.♗xc4 rare+ 7...♗b6.....	81
4...dxc4 5.a4 ♕f5 6.♗e5 ♖bd7 7.♗xc4 ♗c7 rare+8.g3 e5 9.dxe5 ♗xe5 10.♕f4 ♗fd7 11.♕g2	90
4...dxc4 5.a4 ♕f5 6.♗e5 ♖bd7 7.♗xc4 ♗c7 8.g3 e5 9.dxe5 ♗xe5 10.♕f4 ♗fd7 11.♕g2 g5	101
Part 2 — Variations 5♗b3; 5g3	113
4...e6 rare +5.♗b3.....	113
Part 3 — Variation 4.♗c3 e6 5.e3 ♖bd7 6.♕d3	123
4...e6 5.e3 ♖bd7 6.♕d3 ♕d6.....	123
Part 4 — Meran	129
4...e6 5.e3 ♖bd7 6.♕d3 dxc4 7.♕xc4 b5 8.♕e2.....	129
4...e6 5.e3 ♖bd7 6.♕d3 dxc4 7.♕xc4 b5 8.♕d3 ♕d6.....	134
4...e6 5.e3 ♖bd7 6.♕d3 dxc4 7.♕xc4 b5 8.♕d3 b4	144
4...e6 5.e3 ♖bd7 6.♕d3 dxc4 7.♕xc4 b5 8.♕d3 ♕b7 9.a3	149
4...e6 5.e3 ♖bd7 6.♕d3 dxc4 7.♕xc4 b5 8.♕d3 ♕b7 9.0-0 b4	155

Part 5 — Classic Meran.....	161
4...e6 5.e3 ♘bd7 6.♙d3 dxc4 7.♙xc4 b5 8.♙d3 ♙b7 9.0–0 a6 10.e4 c5 11.d5 ♚c7.....	161
4...e6 5.e3 ♘bd7 6.♙d3 dxc4 7.♙xc4 b5 8.♙d3 ♙b7 9.0–0 a6 10.e4 c5 11.d5 ♚c7 12.dxc6 fxe6 13.♚c2	167
4...e6 5.e3 ♘bd7 6.♙d3 dxc4 7.♙xc4 b5 8.♙d3 ♙b7 9.0–0 a6 10.e4 c5 11.d5 ♚c7 12.dxc6 fxe6 13.♙c2.....	169
4...e6 5.e3 ♘bd7 6.♙d3 dxc4 7.♙xc4 b5 8.♙d3 ♙b7 9.e4 b4 10.♘a4 c5 11.e5 ♘d5 12.dxc5	175
4...e6 5.e3 ♘bd7 6.♙d3 dxc4 7.♙xc4 b5 8.♙d3 ♙b7 9.e4 b4 10.♘a4 c5 11.e5 ♘d5 12.0–0	178
4...e6 5.e3 ♘bd7 6.♙d3 dxc4 7.♙xc4 b5 8.♙d3 ♙b7 9.e4 b4 10.♘a4 c5 11.e5 ♘d5 12.0–0 cxd4 13.♚e1.....	185
Part 6 — Meran 8...a6.....	191
4...e6 5.e3 ♘bd7 6.♙d3 dxc4 7.♙xc4 b5 8.♙d3 a6 9.e4 c5 10.d5	191
4...e6 5.e3 ♘bd7 6.♙d3 dxc4 7.♙xc4 b5 8.♙d3 a6 9.e4 c5 10.e5.....	193
Part 7 — Anti – Meran.....	205
4...e6 5.e3 ♘bd7 6.♚c2.....	205
4...e6 5.e3 ♘bd7 6.♚c2 ♙d6 rare+7.b3.....	209
4...e6 5.e3 ♘bd7 6.♚c2 ♙d6 7.g4	217
4...e6 5.e3 ♘bd7 6.♚c2 ♙d6 7.♙d3 0–0 8.0–0 dxc4 9.♙xc4.....	221
Part 8 — Rare Botvnnik variations.....	233
4...e6 5.♙g5 dxc4 rare +Smyslov Variation 6.e4 b5 7.e5 h6 8.♙h4 g5 9.♘xg5 hxg5 10.♙xg5 ♙c7.....	233
Part 9 — Botvinnik Variation	241
4...e6 5.♙g5 dxc4 6.e4 b5 7.e5 h6 8.♙h4 g5 9.♘xg5 hxg5 10.♙xg5 ♘bd7 11.g3 ♚g8.....	241
4...e6 5.♙g5 dxc4 6.e4 b5 7.e5 h6 8.♙h4 g5 9.♘xg5 hxg5 10.♙xg5 ♘bd7 11.g3 ♚a5	245
4...e6 5.♙g5 dxc4 6.e4 b5 7.e5 h6 8.♙h4 g5 9.♘xg5 hxg5 10.♙xg5 ♘bd7 11.g3 ♙b7 12.♙g2 ♚b6 13.exf6 0–0–0 14.0–0 rare+14...c5 15.d5 b4 16.♚b1	249
4...e6 5.♙g5 dxc4 6.e4 b5 7.e5 h6 8.♙h4 g5 9.♘xg5 hxg5 10.♙xg5 ♘bd7 11.g3 ♙b7 12.♙g2 ♚b6 13.exf6 0–0–0 14.0–0 c5 15.d5 b4 16.♘a4 ♚a6.....	254
4...e6 5.♙g5 dxc4 6.e4 b5 7.e5 h6 8.♙h4 g5 9.♘xg5 hxg5 10.♙xg5 ♘bd7 11.g3 ♙b7 12.♙g2 ♚b6 13.exf6 0–0–0 14.0–0 c5 15.d5 b4 16.♚b1 ♚b5.....	259

Part 10 — Moscow Variation	269
4...e6 5.♗g5 h6 6.♗xf6 ♖xf6	269
4...e6 5.♗g5 h6 6.♗xf6 ♖xf6 7.e3 g6.....	276
4...e6 5.♗g5 h6 6.♗xf6 ♖xf6 7.e3 ♘d7.....	281
Part 11 — Anti – Moscow Variation.....	291
4...e6 5.♗g5 h6 6.♗h4 dxc4 7.e4 g5 8.♗g3 b5 rare+9.♗c2 ♗b7 10.e5	291
4...e6 5.♗g5 h6 6.♗h4 dxc4 7.e4 g5 8.♗g3 b5 9.♗c2 ♗b7 10.h4 g4 11.♘e5 h5	306
4...e6 5.♗g5 h6 6.♗h4 dxc4 7.e4 g5 8.♗g3 b5 9.♗c2 ♗b7 10.h4 g4 11.♘e5 ♘bd7.....	310
4...e6 5.♗g5 h6 6.♗h4 dxc4 7.e4 g5 8.♗g3 b5 9.♗c2 ♗b7 10.0–0 ♘bd7 11.♘e5 h5.....	318
4...e6 5.♗g5 h6 6.♗h4 dxc4 7.e4 g5 8.♗g3 b5 9.♗c2 ♗b7 10.0–0 ♘bd7 11.♘e5 ♗g7	323

Preface

The second part of the Complete Slav contains all systems that were not presented in the first part, namely a popular variation 3. ♘f3 ♘f6 4. ♗c3 dxc4 and also all systems after 4...e6. Not to mention the possibilities such as 5. g3 or 5. ♖b3, I have presented lines after 5. e3 ♗bd7 - for starters Meran (6. ♗d3 dxc4 7. ♗xc4 b5) and Anti-Meran (6. ♖c2 ♗d6) lines. Also the variations arising after 5. ♗g5 are examined deeply, namely Moscow (5... h6 ♗xf6) and Anti-Moscow (5... h6 ♗h4) variations as well as Botvinnik system 5... dxc4.

A possibility to cover such a multitude of systems in only one book (it was possible to create even 5 tomes) occurred only because I have tried to shorten the lines almost to the bare minimum.

There are plenty of openings books in where not the most important lines are covered - this leads to a creation of plenty unnecessary variations - the book starts to be 'wishy-washy'. In such situations I have decided to only describe why this or other move does not deserve to be examined deeply. Thanks to such a way of thinking this elaboration did not lose its quality and in my opinion it is even easier to find a relevant recommendation.

All of presented variations are analyzed on the same level as those described in the first part of whole elaboration.

The book covers the state of the theory for July 2013.

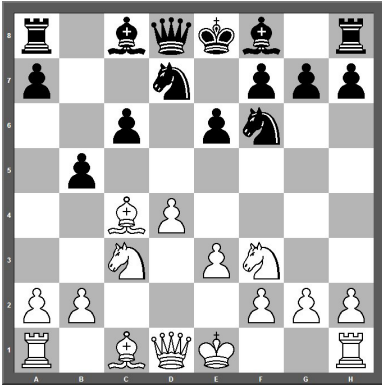
Konstantin Sakaev

PART 4

Meran

GAME 15

1.d4 d5 2.c4 c6 3.♘f3 ♘f6 4.♗c3 e6
5.e3 ♗bd7 6.♙d3 dxc4 7.♙xc4 b5

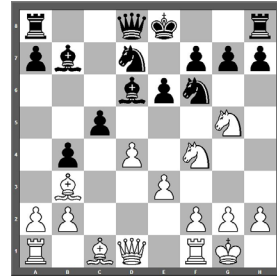


8.♙e2

A little bit passive continuation, which does not support e3–e4. Of course, if Black does not play precisely, he will not manage to equalize.

8.♙b3 Here the bishop does not stand well and therefore White cannot fight for an advantage. Black has several possibilities: 8...b4 (Also 8...♙b7 leads to a rather equal position, e.g. 9.0-0 ♙e7 – after short castling, Black will play b5–b4 and c6–c5.) 9.♗e2 (9.♗a4 ♙a6) White needs to make a lot of moves to cover the f1–a6 diagonal

with his bishop. Probably, he is able to keep equality, but nothing more.) 9...c5 (9...♙b7 is also possible.) 10.0-0 ♙b7 11.♗f4 (11.♗g3 ♙e7) 11...♙d6 12.♗g5 White wants to sacrifice a piece on e6, but after simple prophylactic



12...♙c7! it does not work and Black obtains a much more pleasant position.(12...♙xf4 13.exf4 0-0= Zheliandinov – Sveshnikov, Bled 1999)

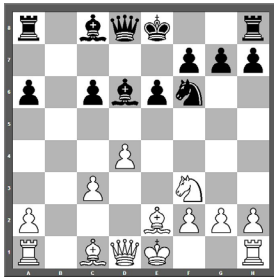
8...♙b7

Other moves do not seem to be convincing.

8...b4 9.♗a4 ♙b7 10.0-0 ♙c7 – 8...Bb7 9.0-0 b4 10.Ne4 Be7;

8...a6 It is also possible to prepare c6–c5 without weakening white squares by playing b5–b4, but everyone may still feel that Black loses an extra tempo here. 9.0-0

(9.c4 b4 10.c5 bxc3 11.exf6 ♘xf6 (11...cxb2 12.fxg7 ♙xg7 13.♙xb2 leads to a very favorable position for White. Black's king will not find himself safe on the kingside.) 12.bxc3 ♙d6 A move a7–a6 occurs unnecessary but on the other hand a pawn structure after c6–c5 will be convenient for Black.



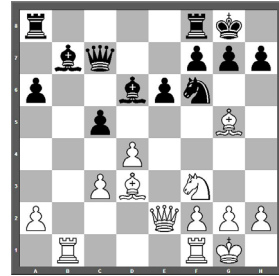
13.c4!/? Rather a rare move. Though, it is the only continuation which may create serious problems for Black.

a) 13.♙a4 ♙d7 (13...0-0!?) 14.♗c5 c5 15.♗xd7 ♙xd7 16.♙xd7+ ♗xd7 17.♙f3 ♖ac8!= (17...♖ab8 18.dxc5 ♙xc5 19.♙f4±) 18.♙b7?! 18...♖b8 19.♙xa6 cxd4 20.cxd4 ♙b4+ 21.♗e2 ♙c3 22.♙f4 ♖b2+ 23.♗d3 ♗d5±;

b) 13.♗d2 0-0 14.♗c4 ♙e7 15.♙f3 ♙c7 16.♙g5 a5! 17.♗e5 (17.♙d2 ♗d5 18.♙xe7 ♗xe7±) 17...♙a6 18.♗xc6 ♙d6;

c) 13.0-0 0-0 14.♙g5 (14.♗e5 ♙c7 15.♙f3 ♙b7 16.♖b1 ♖ab8 17.♖e1 c5=) 14...c5

(The simplest 14...♙c7 after 15.♙d3 (15.♙xf6 gxf6 16.♙d3 c5=) 15...c5 16.♙c2 ♙b7 17.♖ab1 requires accuracy from Black.



17...c4! (17...♗d5? 18.♖xb7 ♙xb7 19.♙e4 g6 20.c4±) 18.♙c2 ♗d7 19.♗e5 (19.♖xb7 ♙xb7 20.♙e4 ♙c7 21.♙xa8 ♖xa8=) 19...♙d5 20.♗xd7 ♙xd7 21.♙f6 gxf6 22.♙g4+ ♗h8 23.♙h4 f5 24.♙f6+ ♗g8 25.♙g5+=)

15.♗e5 ♙c7 16.♙xf6

(16.♙f3 ♗d5 (16...♖b8=) 17.c4 ♗c3 18.♙d3 cxd4=)

16...gxf6 17.♙d3 fxe5 18.♙xh7+ ♗xh7 19.♙h5+=;

13...c5 (13...0-0 14.c5±) 14.dxc5 ♙a5+ (14...♙xc5 15.♙xd8+ ♗xd8 16.♗e5±) 15.♙d2 ♙xc5 16.0-0 0-0 17.♙c3 ♙c7 18.c5 ♙e7 19.♖c1 Black has a counterplay, but playing against such a developed pawn is not very pleasant.)

9...c5 (9...♙b7 – 8...Bb7 9.0-0 a6) 10.d5 exd5 11.♗xd5 ♙b7



12. ♖xf6+ ♔xf6! (12... ♖xf6
 13. ♖xd8+ ♔xd8 14. a4 b4
 15. ♖d2 ♔d6 16. f3± Jakovenko
 – Ponomarev, Eilat 2012) 13. a4
 b4 14. ♖c2± Looking on a pawn-
 structure, White stands better,
 but because of the Black's pieces
 activity, he should have hardly any
 problems with equalizing.

9.0-0

9. e4 b4 10. e5 bxc3 11. exf6 ♖xf6

(After 11...cxb2 White may choose
 to play a position with 4 queens
 which is more favourable for him.
 12. fxg7 bxa1 ♖ (12... ♔xg7 13. ♔xb2
 ♖a5+ 14. ♖d2



14...c5 15.0-0 cxd4 16. ♖c4 ♔d5
 17. ♔f3 ♖xc4 18. ♔xb7 ♔b8
 19. ♔a3± White's initiative is very
 strong.) 13. gxh8 ♖ ♖a5+ 14. ♖d2 c5

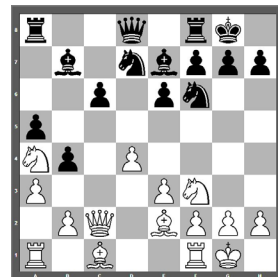
15.0-0 ♖xd4 16. ♖xh7± a position
 of Black's king is unenviable,
 and even if Black takes a pawn
 16... ♖xa2? White can play 17. ♔c4!
 17... ♖f6 18. ♖h8 ♖aa1 19. ♔b5+
 ♔e7 20. ♖b3 ♖xd1 21. ♔xd1
 ♖b1 22. ♖xc5 ♖xb5 (22... ♖c2
 23. ♔a4 ♖xc5 24. ♖h3+- with the
 following Bc1-a3.) 23. ♔a3+-)

12. bxc3 ♔d6 13.0-0 (13. ♖b3
 ♔b8!15; 13. ♔b1 ♖c7 14. ♖e5 0-0
 15. ♖c4 ♔e7 16. ♔f4 ♖xf4 17. ♔xb7
 ♖e4 18. ♔f3 ♖xc3 19. ♖d2 ♖xd2+
 20. ♔xd2 ♖d5±) 13...0-0 14. ♔g5
 c5 15. ♔b1 ♖c7 16. ♔xf6 gxf6±
 a position of Black's king is reliable,
 despite of the doubled pawns.

9... ♔e7

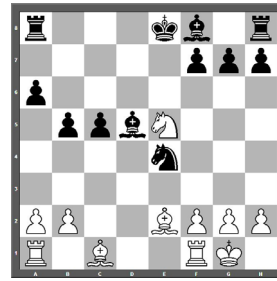
The best solution is to develop
 further, provoking White to play on
 the queenside.

9...b4 10. ♖a4 ♔e7 11. a3 (11. ♖c2
 Is also interesting. After 11...0-0
 12. ♔d1 White's idea is to play
 a2-a3.) 11...a5 (11...bxa3 12. b3!
 12...0-0 13. ♔xa3±) 12. ♖c2 0-0



13. ♔d1

(13.axb4 axb4 14.♔d2 ♖a5 15.♜fc1
 (15.♞b3 c5 16.dxc5 ♘xc5 17.♘xc5
 ♜xa1 18.♞xa1 ♔xc5 19.♔e1=
 Aleksandrov – Kharlov, Saint
 Vincent 2000) 15...♞a8 16.♞d1
 ♞a7 17.♘c5 ♔xc5 18.dxc5 ♜xa1
 19.♞xa1 ♞xc5 20.♞b3 ♞b8
 21.♞xb4 ♞xb4 22.♔xb4 c5=)



13...♞c8

(13...c5 14.dxc5 (14.♘xc5 ♘xc5
 15.dxc5 ♞c7= Timman – Lautier,
 Wijk aan Zee 1994) 14...♞c7
 15.axb4 axb4 16.♔d2± Black
 should play more precisely in
 order to exterminate the pawns
 on the queenside. Flear–Lautier,
 France 2005.)

14.axb4 axb4 15.♔d2 ♔a6 16.♔xa6
 ♞xa6 17.b3± – the pawn b4 has
 been stopped on his bishop's colour
 square and therefore White stands
 better.;

9...a6 10.e4 c5 11.d5! (11.e5 ♘d5
 12.a4 b4 13.♘e4 ♞c7∞ leads to a
 double-edge position with rather
 even chances.) 11...exd5 12.e5 ♘e4
 13.♘xd5 ♘xe5 (13...♘b6 14.♘xb6
 ♞xb6 15.♔e3 ♔e7 16.a4±; 13...c4
 14.♞d4 ♘dc5 15.♞d1±) 14.♘xe5
 ♞xd5 15.♞xd5 ♔xd5

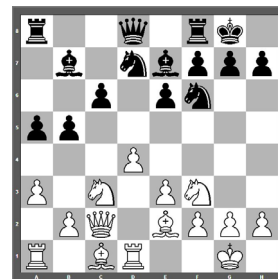
16.♞d1 ♔b7 (16...♔e6 17.a4 b4
 18.♔e3↑; 16...♞d8 17.a4↑) 17.♘xf7
 ♘xf7 18.♞d7+ ♔c7 19.♞xb7± Due
 to a bishop pair, White stands
 more pleasant but because of lack
 of material – Black should reach
 a draw. Illescas Cordoba – Vallejo
 Pons, Ayamonte 2002

10.e4

10.b3 0-0 11.♔b2 a6 12.♞c1 c5 13.a4
 b4 14.♘b1 ♞c8= Dizdarevich – Kir.
 Georgiev, Sarajevo 2011;

10.a3 a5! does not allow neither b2–
 b4 nor c3–e4. What is more, Black
 will have the opportunity to play
 b5–b4. 11.♞c2 (11.♞b3 0-0

12.♔d2 b4 13.axb4 axb4 14.♘a4
 c5∓ Blagojevic – Bologan, Neum
 2008) 11...0-0 12.♞d1 (12.♔d2

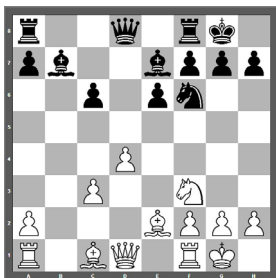


12...♖b8! 13.♟fc1 ♜c8 14.♞d1 b4
 15.♞a4 c5 (15...♞e4 16.♙e1 c5
 17.dxc5 ♞dxc5 18.♞xc5 ♟xc5
 19.♟xc5 ♞xc5 20.axb4 axb4
 21.♟xa8 ♙xa8=) 16.dxc5 ♙d5
 17.axb4 axb4 18.♞c1 ♙b3 19.c6
 ♙xa4 20.cxd7 ♟xc1 21.♞xc1 ♙xd7
 22.♟xa8 ♞xa8 23.♞c5 ♙c8=
 Harikrishna – Potkin, Goa 2002)

12...♖b8! Not the only good continuation, but the most solid and promising one. From this square, the queen: will help with pawn breaks, cannot be attacked and prepares 'c8' square for a rook. 13.c4 b4 14.♞a4 c5 15.e5 ♙c4 16.♙d3 ♙xd3! (16...♙xf3 17.gxf3 b3 18.♞b1± Melkumyan – Hovhannisyan, Yerevan 2012) 17.♞xd3 ♞d5 18.♙g5 (18.♞xc5 ♞xc5 19.dxc5 ♟c8=) 18...cxd4 19.♙xe7 ♞xc7 20.♞xd4 ♞d5= Dyachkov – Pashikian, Moscow 2009

10...b4 11.e5 bxc3 12.exf6 ♙xf6

12...♞xf6 is not very convincing
 13.bxc3 0-0



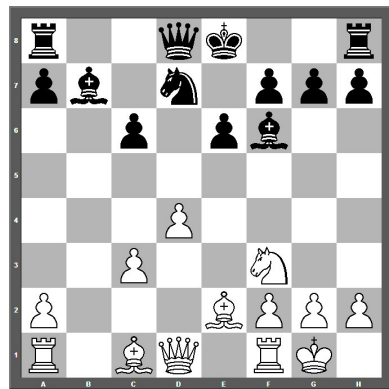
14.♟b1 ♞c7

(After 14...♞c8 White may try

15.♞b3 ♙a6 16.c4!? in order to limit the bishop a6. After (16. ♙xa6 ♞xa6 17.♞e5 ♙d6 18.♞c4 ♞a5=) 16...c5 17.♙f4± White stands more actively.)

15.♙f4 ♞xf4 16.♟xb7± – White keeps a pressure.

13.bxc3



13...c5!

13...0-0 14.♟b1± Black has problems with defending the light-square bishop.

14.dxc5

14.♟b1 ♙c4 15.♙d3 ♙xd3 16.♞xd3 0-0 17.♟d1 cxd4 18.cxd4 ♞a5=

14...♞xc5

The easiest way to obtain fully-fledged play. 14...0-0 used to be popular, but nowadays is not anymore. 15.♙a3 ♙c7

15.♙b5+

15.♙a3 ♞c7

(15...♖a5 Black should not allow bishop to go on b4, in some variations a3 square can be used by queen. 16.♙b4 ♖c7 17.♞b1 ♞d8 18.♞c1 ♙xf3 (After 18...0-0? White can play 19.♞a3!; 18...♗d3 is risky – 19.♙xd3 ♞xd3 20.♞a3 – Black cannot castle.) 19.♙xf3 ♗d3 20.♞a3 ♗xb4 21.♞xb4±)

16.♞b1 ♞d8 17.♞c1 0-0! 18.♞e3 (18.♙xc5 ♙xf3) 18...♙xf3 19.♙xf3 ♙c7= Black blocks c5-square and his chances are not worse.

15...♗f8 16.♞xd8+

16.♙a3 ♖c7 – Black's plan is to play Kf8–g8, h7–h5 etc.

16...♞xd8 17.♙a3 ♞c8 18.♞ab1

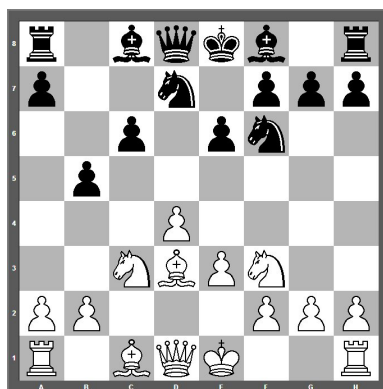
18.♗d4 ♙c7 (18...♗g8!? appears to be also interesting – it prepares an artificial castling.) 19.♞fd1 ♗e4! (19...a6 20.♙f1= Kramnik – Topalov, Elista (m/4) 2006) 20.♙b4 ♙xb4 21.cxb4 ♗c3

18...♙e7 19.♗e5 g6 20.♞fd1 ♗g7 21.f3 ♞hd8 22.♗d7 ♙c6 23.♗xc5 ♞xd1+ 24.♞xd1 ♙xb5 25.♗xe6+ fxe6 26.♙xe7 ♞xc3=

Draw is unavoidable. Rare continuations 8.Bb3?! and 8.Be2 do not seem to fight for an initiative and create hardly any problems for Black.

GAME 16

1.d4 d5 2.c4 c6 3.♗f3 ♗f6 4.♗c3 e6 5.e3 ♗bd7 6.♙d3 dxc4 7.♙xc4 b5 8.♙d3



8...♙d3

This continuation started to be fashionable thanks to Vadim Zvjaginsev. In last few years it has started to be very popular – also the World Champion Viswanathan Anand is a supporter of it. Black does not define the pawn structure on the queenside and prepares to a 'pawn conflict' in the centre. After e3–e4, Black will reply e6–e5! and White's light-square bishop will be limited.

9.0-0

9.e4 e5 10.dxc5 ♗xc5 11.♗xc5 ♙xc5 12.f4 ♙d4

9.♗g5 ♙b7 10.♙d2 (10.0-0 0-0 11.♙d2 h6 12.♗ge4 ♙e7=; 10.♞f3 h6 11.♗ge4 ♗xe4 12.♗xe4 ♙e7 13.0-0 0-0 Mamedyarov – Aronian, Nice 2008) 10...h6 11.♗ge4 ♙c7 12.♞c2