

CSABA BALOGH

# GREATEST 365 PUZZLES



Responsible editor  
Csaba Balogh

Cover designer  
Milos Sibinovic

Typesetting  
Piotr Pielach <[www.i-press.pl](http://www.i-press.pl)>

First edition 2012 by Chess Evolution

*Greatest 365 puzzles*  
Copyright © 2012 Csaba Balogh

All rights reserved. No part of this publication may be reproduced, stored in a retrieval system or transmitted in any form or by any means, electronic, electrostatic, magnetic tape, photocopying, recording or otherwise, without prior permission of the publisher.

ISBN 978-83-934656-2-0

All sales or enquiries should be directed to Chess Evolution  
ul. Smutna 5a, 32-005 Niepolomice, Poland

e-mail: [chessevolutionshop@yahoo.com](mailto:chessevolutionshop@yahoo.com)  
website: [www.chess-evolution.com](http://www.chess-evolution.com)

Printed in Poland by Drukarnia Pionier, 31-983 Krakow, ul. Igolomska 12

---

## TABLE OF CONTENTS

---

Key to symbols	5
Editorial Preface	7
Introduction	9

Easy

Solutions to Easy

Medium

Solutions to Medium

Hard

Solutions to Hard

Introduction of Test

Test #1

Solutions of Test #1

Test #2

Solutions of Test #2

Test #3

Solutions of Test #3

Test #4

Solutions of Test #4

Test #5

Solutions of Test #5

Introduction of Top 10

Top 10

Solutions to Top 10



---

## KEY TO SYMBOLS

---

=	Equality or equal chances
±	White has a slight advantage
∓	Black has a slight advantage
±	White is better
∓	Black is better
+ -	White has a decisive advantage
- +	Black has a decisive advantage
∞	unclear
∞̄	with compensation
↔	with counterplay
↑	with initiative
→	with an attack
Δ	with the idea
□	only move
N	novelty
!	a good move
!!	an excellent move
?	a weak move
??	a blunder
!?	an interesting move
?!	a dubious move
+	check
#	mate



---

## EDITORIAL PREFACE

---

As a professional chess player, I know exactly how important it is to perform well in tactical calculations. We face them so often, that after playing a great game, we can simply blunder something and throw away a safe point, causing ourselves sleepless nights!

In almost 15 years of active chess career I have solved thousands of puzzles, like most of my GM colleagues — it is a clear must for a professional player to stay in a sharp shape.

Many puzzle books are based on artificial positions or selected only for their beauties. The concept of my book is different. The highest priority is to **use „the practical aspect of the puzzles” and take the level of calculation to a completely new dimension.**

All the puzzles have been selected from recent games, trying to put the reader in the shoes of „the player”.

The strength of the different sections also might give you the right evaluation of your current tactical skills and will develop them further.

I tried to mix three things in my book:

1. have a lot of fun by solving the puzzles,
2. discover many new tactical ideas,
3. and of course the direct practical use in the future games.

A very important moment to keep in mind — all the **practical motifs from the book can definitely be used in your future games!**

Enjoy!





---

# INTRODUCTION

---

## Useful information for the dear readers

The book contains 365 puzzles of different level and a huge range of tactical ideas. All the puzzles have been collected from practical games of the first four months of the year 2012, from events like Wijk ann Zee, Gibraltar, Aeroflot Open, the European Individual Championship, etc

## The book consists of five chapters

1. **Easy** (109 Puzzles)
2. **Medium** (122 Puzzles)
3. **Hard** (74 Puzzles)
4. **Tests** (50 Puzzles)
5. **The Top 10 section** (10 Puzzles)

All in all 365 puzzles.

In the „**easy**”, „**medium**” and „**hard**” sections, the puzzles are sorted according to the date of the current game. The „**Top 10**” is based on the level of beauty of the puzzles.

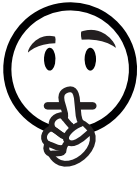
I advice you to finish the first three chapters of the book. Before going to the „**test**” section.

The „**easy**” section is a good warm-up, but even here you might find some examples, which are not direct. For the „**medium**” you will need to find a silent place and to concentrate better, some of the puzzles are already as hard as a walnut. For the „**hard**” section you must be... hard! Some positions are very tough, here you should definitely pay more attention to the „**smiley**” helpers which could lead you to the right path.

## Here are your four biggest helpers



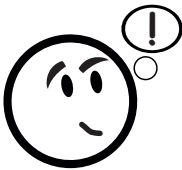
- if you see this face, then there are two ways to victory.



- try to find a silent move, which is usually based on a tactical idea



- Your intuition is requested now. When it is impossible to calculate the lines until the end, you should try to feel that things must work out well for you.



- it is really the time to have a deep thought. It might be, that the most obvious move is not the right one or the „main” move of the line is not the first one.

In case You see a puzzle without a „smiley”, you need to find the right moves on your own.

Each chapter has its own solution part, in some of the puzzles you will find word explanations as well.

---

**– EASY –**

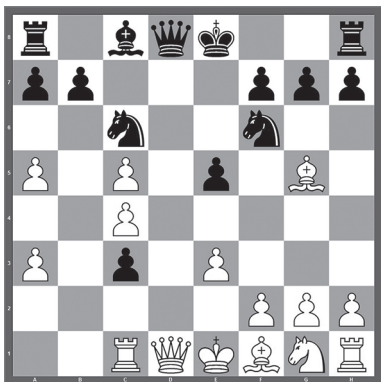
---



**(1)**

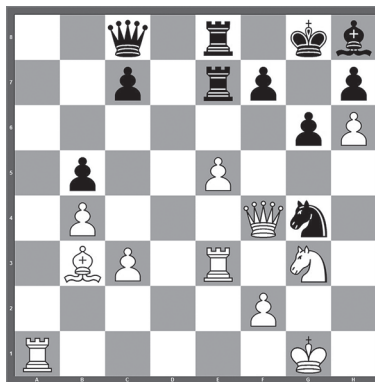
- ▷ L. Babujian (2474)
  - ▶ S. Ter Sahakyan (2569)
- Armenian Championship  
22.01.2012

1... -+

**(2)**

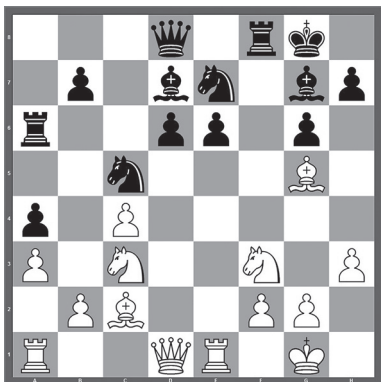
- ▷ A. Motylev (2677)
  - ▶ D. Vocaturo (2545)
- Wijk aan Zee  
22.01.2012

1. +-

**(3)**

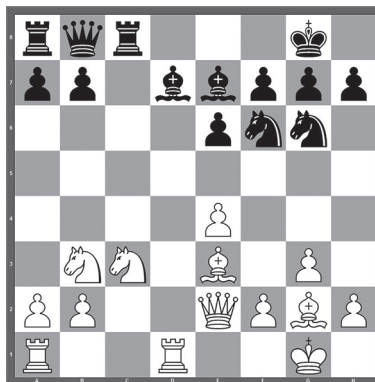
- ▷ J. Alvarez Marquez (2398)
  - ▶ V. Bologan (2680)
- Gibraltar  
24.01.2012

1. +/-

**(4)**

- ▷ V. Erdos (2634)
  - ▶ T. Coleman (2536)
- Gibraltar  
24.01.2012

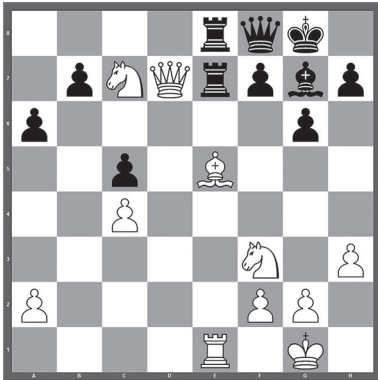
1. +/-



**(5)**

- ▷ R. Felgaer (2571)
- ▶ A. Oberhofer (2299)
- Gibraltar
- 24.01.2012

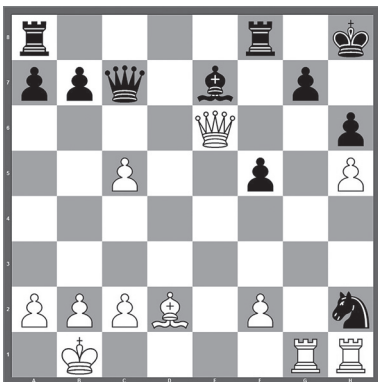
1. +-



**(7)**

- ▷ M. Parligras (2650)
- ▶ F. El Debs (2497)
- Gibraltar
- 25.01.2012

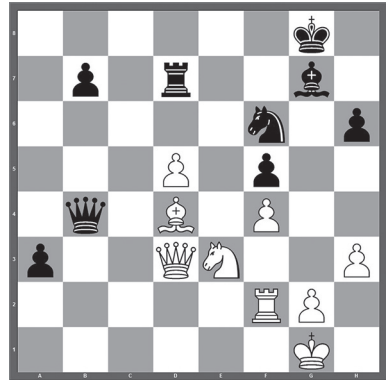
1. +-



**(6)**

- ▷ E. Lund (2414)
- ▶ S. Movsesian (2700)
- Gibraltar
- 24.01.2012

1... -+



**(8)**

- ▷ J. Gallagher (2505)
- ▶ C. Allor (2145)
- Gibraltar
- 27.01.2012

1. +-

